

**4-H
School
Enrichment
Program**



2010

Spring Semester

Dear Teachers,

K-State Research and Extension has a long tradition of providing school enrichment programs to classrooms in Shawnee County. Again this year we are offering you opportunities to supplement your curriculum with exciting, hands on, educational programs! Many of our programs are loaned at no cost to the schools, while some programs require a small fee to cover the cost of materials being used. We invite you to take advantage of the 4-H School Enrichment programs offered on the following pages.

Order forms received in our office by **October 16, 2009** will be given first priority. Any requests made after that date will be filled only if program space is available, and on a first come first serve basis. **(Note: Programs delivered during spring semester only)**

Return the attached form to:

K-State Research & Extension
Shawnee County, c/o Brooke Gray,
1740 SW Western
Topeka, KS 66604

Website: www.shawnee.ksu.edu

Email: Begray@ksu.edu or Slaib@ksu.edu

Phone: (785) 232-0062 ext 112

Fax (785) 232-0093

Programs Available

Ants

Audience: Grade 4 **Cost:** \$7.00

Delivery Mode: Presented by Extension staff in your classroom, and then left for observation for three weeks. **Objectives:** Discover the complex society within the ant colony, study ant anatomy and learn the benefits and problems that ants can cause for humans. **State standard:** Life Science by developing knowledge of organisms in their environment. **Program includes:** Observation Ant Farm, live ants and ant food, a teacher handbook, student handouts, Little Creatures Who Run the World video. **Teacher Provides:** Safe environment, administers pre/post Test, careful daily observation, VCR/DVD. Note: if you use your own ant farm, you'll need to supply the sand.

Butterflies

Audience: Grade 1 **Cost:** \$6.25

Delivery Mode: Presented by Extension staff in your classroom, and then left for observation for three weeks. **Objectives:** Learn what insects are and how they fit into the world of living things. Study and observe the butterfly's development from larva to adult. **State standard met:** Life Science by observing and learning the life cycle of a butterfly. **Program includes:** Butterfly cage, 3 Painted Lady butterfly larvae, teacher guide, Butterfly World video. **Teacher provides:** Careful daily observation, VCR/DVD, safe environment.

Capable Kids Can

Audience: Grade 4-6

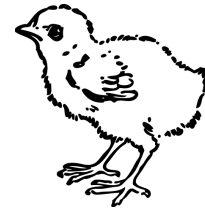
Cost: None

Delivery mode: Delivered to school office and loaned for two weeks.

Objectives: Work with parents and teachers to learn skills to use when alone. Demonstrate time-management skills and creative use of time, show increased self-esteem as a result of successfully learned self-care skills.

Program includes: Teacher resource notebook, Home Alone video, student

handouts. **Teacher provides:** VCR/DVD, handouts in quantity.



Chick Embryology

Audience: Grade 2

Cost: \$6.00

Delivery Mode: Presented by Extension staff to your class, and then left with you for four weeks.

Objectives: Learn about chick growth and development, develop cooperative record keeping skills necessary to care for eggs, relate chick

development to that of other animals. **State standards:** Life science by observing the life cycle of living things. Program

includes: fertilized eggs, incubator, thermometer, educational materials, detailed instructions, baby chick food. **Teacher**

provides: Turn eggs three times daily, careful daily observation of temperature and humidity, VCR/DVD.

3Rs: Reduce, Reuse, Recycle

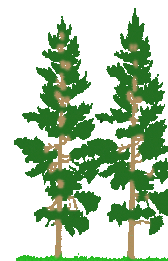
Audience: Grades K-3 or 4-8 **Cost:** None

Delivery mode: Delivered to school office and loaned for three weeks. **Objectives:** Students will learn about the effects of solid waste in the environment and ways to reduce, reuse and recycle trash and other waste. **State standards:** Kansas Science Standard 6: Science in Personal & Environmental Perspectives. **Program includes:** Graded curriculum booklet containing five lessons for teacher to copy in quantity.

George Washington Carver

Audience: Gr. 4-6 **Cost:** None

Delivery Mode: Delivered to your school office and loaned for two weeks. **Objectives:** Learn about the life and accomplishments of George Washington Carver, study the science of growing peanuts and sweet potatoes, students learn about cultural diversity and how it affected Carver. **State standard:** U.S. and World History and Economics - how growing peanuts effected the economy of the South. **Program includes:** Teacher resource book, materials to grow peanuts in classroom, student handouts.



Understanding the Trees Around Us

Audience: Grade 3 **Cost:** None

Delivery Mode: Delivered to your school office and loaned for two weeks. **Objectives:** Learn how trees maintain the quality of our environment, develop an awareness of trees in your community, have a better understanding of the uses of trees in Kansas and understand in general how trees help us to live.

State standard: Earth and Space by classifying leaves and trees and learning the effects on the environment. **Program includes:** Leaf and wood samples, Kansas Tree video, teacher resource book, student handouts, Smokey Bear video. **Teacher provides:** VCR/DVD, handouts in quantity, optional nature walk.

Talking with TJ

Audience: Grade 3-4 **Cost:** None

Delivery Mode: Delivered to your school office and both series are loaned together for four weeks. **Teamwork Series objectives:** Discuss the three skills that help with good planning, recognize differences among people, discover techniques that allow people to work together, demonstrate how to support and encourage others. **Conflict Resolution Series objectives:** List the techniques used to keep anger under control, show how to respect other people's points of view. Demonstrate effective communications to resolve arguments, use the skills learned in your daily life. **Program includes:**

Teacher lesson plans, 8 Talking with TJ posters, Teamwork and Conflict Resolution videos, activities sheets. **Teachers provides:** VCR/DVD, handouts in quantity.



A Close Look at Farm Animals, Insects and Trees

Audience: Grade 3-5 **Cost:** None

Delivery Mode: Delivered to your school office and loaned for two weeks. **Objectives:** This program is a science-based

program that explores many different aspects of agriculture production including agronomy, aquiculture, ecology, entomology, food processing, forestry, horticulture and hydroponics. **State standards:** Science as Inquiry: Skills

necessary to do scientific inquiry; Life Science: Life cycles of organisms; Economics, Benchmark 5: Effective decisions as consumer, producer, saver, investor, citizen; Math, Benchmark 4: Number and computation. **Program includes:** Teacher notebook with reproducible activity sheets covering agricultural

topics: *Why Can a Cow Eat Grass? "Wood" You Take Care of Me? What's Bugging You? Why Do Horses Run So Fast? How Do You Grow a Fish Sandwich?* and *From Moo to You.*

Wheat Science

Audience: Grade 4

Cost: \$1.00 per student

Delivery Mode: Delivered to your school office and loaned for two weeks. **Objectives:** Learn about Kansas wheat and wheat processing. Prepare an individual loaf of bread for each class member. **State standard:** Economics of how natural, capital, and human resources are used in production of goods and services. **Program includes:** One bread kit per three students, classroom bread-making instruction, teacher handbook, two wheat videos. **Teacher provides:** VCR/DVD, water, oil, and an oven to bake bread in.

Simply Science - Food

Sponsored by Bayer Corp.

Audience: Grade Kindergarten - 3. **Cost:** None **Delivery**

Mode: Delivered to your school office and loaned for four weeks. **Objectives:** Each lesson looks at different aspects of food - nutrition, health, economy, etc. Lessons are: 1) Food - what, why, how, where, when, who? 2) Where do we find it? 3) How can we tell what it's made of? 4) Why do we need it? 5) What happens to it in the body? 6) How do we know we have what we need? **State standard:** Science in Personal and Environmental Perspectives. **Program includes:** Notebook with instructions for hands-on experiments, and supplies for experiments (except perishable food). **Teacher Provides:** Perishable food.

Simply Science - Technology

Sponsored by Bayer Corp.

Audience: Grade 4-6 **Cost:** None

Delivery mode: Delivered to your school office and loaned for four weeks. **Objectives:** Each lesson looks at how technology affects our lives and includes experiments to conduct in the classroom. Lessons are: 1) A Simple Inquiry – Nails Take a Stand; 2) What is Technology - Patently Absurd; 3) Design Problem: Water Going Uphill; 4) Defending Technology; 5) Technology and Time; 6) Electrifying Technology; 7) Take Flight.

State standards: Science as Inquiry and Science & Technology. **Program includes:** Notebook with instructions for hands-on experiments and supplies for experiments. **Teacher provides:** Safe environment and adequate space to conduct experiments.

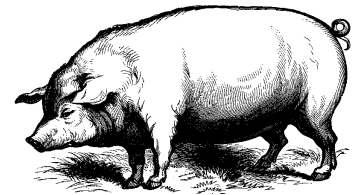
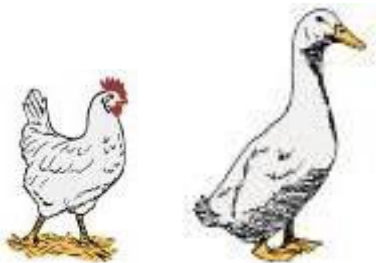


Save the Date!

From Farm to You

Date: April 20, 2010 (Tentatively)

Location: Kansas Expocentre



From Farm to You is a **one-day event** designed to show **second grade students** that agriculture impacts *everyone* from the food we eat to the clothes we wear and more! Every class gets to visit 10 learning stations taught by experts in the field of agriculture. Look for registration information to arrive in your mailbox around Feb. 1st.



Kansas State University Agricultural Experiment Stations and Cooperative Extension Service - - K-State, County Extension Councils, Extension Districts and U.S. Department of Agriculture Cooperating. K-State Research and Extension is an equal opportunity provider and employer.