



# JANUARY 2024

## Highlights:

- Office Closed: January 15, Martin Luther King Jr. Day
- January 7: January Jamboree- still looking for clubs to host tables!
- January 9: Regional Record Book Judging
- January 17: Livestock Committee Meeting
- January 19: Fair Book Cover Contest entries due
- January 26: Chatterbox Submissions Due

## In this Issue:

- Livestock Corner, Page 2
- Scholarship Information, Pages 3 & 7
- Fair Book Cover Contest, Page 4
- Club Days Announcement, Page 5
- Project Listings for 2023-2024, Page 9
- Club Chatter, Page 10
- Shawnee County 4-H Calendar, Page 11



"To Make the Best Better!"

## Dates to Remember:

- January 7: January Jamboree
- January 9: Regional Record Book Judging
- January 15: Office Closed
- January 19: Fair Book Cover Contest Deadline
- February 11: Beef Weigh-in
- February 25: Club Day

Please send Chatterbox submissions to Lisa by January 26

Visit us on the Web:  
[www.shawnee.ksu.edu](http://www.shawnee.ksu.edu)

**Grace Wiens**  
4-H Youth Development Agent  
wiensg@ksu.edu  
785-232-0062 ext.120

**Lisa Satterthwaite**  
4-H Office Professional  
lsatter@ksu.edu  
782-232-0062 ext. 111

## A Word From Your Agent...

Dear 4-H Families,

*Happy New Year*

Happy new year everyone! I hope you all had a restful break and enjoyed the holidays! We are looking forward to 2024 here in the office.

If you are a senior in High School this year, Kansas 4-H has scholarships available that I would really encourage you to apply for! You can find more information about them at this link:

<https://www.kansas4-h.org/resources/awards-and-recognition/scholarships.html>

We are in need of some new superintendents for the 2024 fair! Please be aware, that if a project has no superintendent, we will not be able to have that project. The list includes: **Dog, Electric, Public Presentations**. If you would like to volunteer for this, or know of someone who may be interested, please reach out to the office!

-Grace

**VOLUNTEERS  
NEEDED**



Hi everyone! I am now a full-time member of staff! I look forward to seeing you all! I will be out of the office Tuesday, January 9th for Regional Record Book judging.

Grace will be back at the end of this month!

-Lisa



"To Make the Best Better!"

## Livestock Corner

### **K-State Junior Beef Producer Day**

Date – Saturday, March 2, 2024

Cost - \$20/person by February 12 (\$25/person after February 12)

\*Registration must be RECEIVED by February 12 to receive a t-shirt.

\*\*Both youth and adults attending need to register.

\*\*\*No refunds.

Online Registration - <https://commerce.cashnet.com/KSUASIND>



### **K-State Junior Sheep Producer Day**

Date – Saturday, March 16, 2024

Registration Deadline – February 26

Cost - \$20/person by February 26 (\$25/person after February 26)

\*Registration must be RECEIVED by February 26 to receive a t-shirt.

\*\*Both youth and adults attending need to register.

\*\*\*No refunds.

Online Registration - <https://commerce.cashnet.com/KSUASIND>

### **Important Dates**

Beef Weigh-In: Sunday, February 11th, 1:00-3:00 pm @ Gleason's

Small Animal Weigh-In: Sunday, April 28th, 1:00-4:00 pm @ Blythe's

Spring Livestock Show: Saturday, May 4th @ Holton, KS

**Information for the Spring Show is located on our website on the Flyers page: <https://www.shawnee.k-state.edu/4-h/upcoming-events/flyers/index.html>**

YQCA session dates to be determined

Livestock Committee meetings will begin at 7:15 pm starting this month!

# Shawnee County 4-H Chatterbox



"To Make the Best Better!"

## County Notes



### Shawnee County Extension Foundation Scholarship Information

The Shawnee County Extension Foundation Scholarship application is now available! Find it on our website at [https://www.shawnee.k-state.edu/4-h/awards\\_and\\_recognition/scholarships/index.html](https://www.shawnee.k-state.edu/4-h/awards_and_recognition/scholarships/index.html)

The deadline for this scholarship is **March 29, 2024**

**Note from the SCEEF: 4-Her's are no longer required to reside in Shawnee County, just be a member of Shawnee County 4-H!**

### January Jamboree

January Jamboree will be on **January 7th, from 2-4pm at Countryside United Methodist Church, 3221 S.W. Burlingame Rd.** Our event will be located in the celebration center of the church, accessed from the southern parking lot.

January Jamboree is a craft event that is open to the public where you can make small crafts and see all your 4-H friends! Crafts normally range from being free to around a dollar. All ages are welcome to come create. Invite your friends and make plans to attend the January Jamboree!

Use the QR code on the flyer to sign up your club!



### From Farm To You is Back!

The Shawnee County Extension office is happy to announce we will be hosting From Farm to You in 2024! This is the first time we have had this program since 2019.

From Farm to You will be held **April 23rd** from 9:00am-2:00pm in Domer Arena. We have 750 Shawnee County second graders attending to learn about where their food comes from. We need 4-H'ers (8th graders and above) to act as group leaders throughout the day. 4-H'ers will guide the students and their teachers from learning station to learning station.

This is a great service project and is also fun to watch the second graders learn about their food. We will provide lunch that day and if your school needs a note for your absence, we can do that too! Please email Candis Meerpohl at [candism@ksu.edu](mailto:candism@ksu.edu) and let her know if you can help with this program.

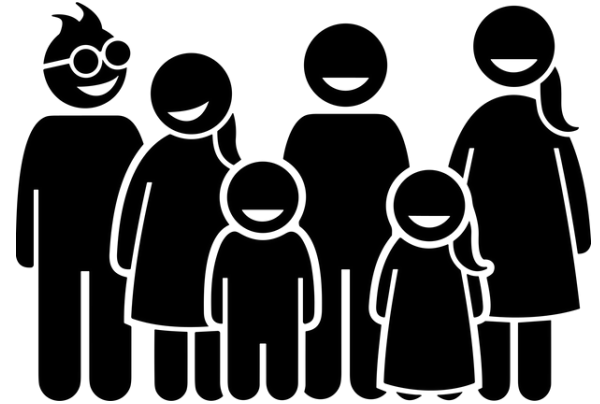


"To Make the Best Better!"

## Community Page

### Shawnee County Fair Board Youth Committee

The Shawnee County Fair Board is looking for 4-Hers interested in being on their Youth Committee. If you are interested, you can contact Ashleigh Mengarelli at [ashleigh.am@gmail.com](mailto:ashleigh.am@gmail.com).



### Shawnee County Fair Board Fair Book Cover Contest

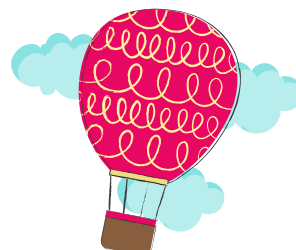
The Shawnee County Fair Board is happy to announce the youth 2024 Fairbook Cover Contest! The 2024 Shawnee County Fair theme is: *Get Carried Away at the Shawnee County Fair*. Below are the rules for entries for the Cover Contest.

Here are the rules:

- Must be on 8 1/2 x 11 paper (Must be done in Portrait Orientation NOT Landscape orientation)
- Design must be in black and white, do not use color
- Art can be hand drawn or computer generated, but must be original
- Must include the dates of the County Fair; July 20-21– County Fair Horse Show, July 25-28– County Fair
- Must mention Open Class
- Must include the theme of the fair (Get Carried Away at the Shawnee County Fair).
- Put your name, phone number and Club on the **BACK SIDE** of the entry.
- Entries are due to the Extension Office by **January 19th, turned into the extension office by 5pm**. They can be scanned and e-mailed to [candism@ksu.edu](mailto:candism@ksu.edu). If selected we will need the original artwork to make into the cover.

There will be a \$50 cash prize for the cover chosen to be on the front of the Fair Book! The runner up will have their artwork printed inside the fair book and will win a \$25 cash prize.

Can't wait to see what our youth come up with!







"To Make the Best Better!"

## Club Days 2024



Sunday, February 25

Shawnee Heights Middle School

★ Showcase your talent!

★ Support your friends!

★ Have fun!



Questions about Club Days? Stay tuned for our new quick guide on the website in February!

More details will be available in the February Chatterbox!



"To Make the Best Better!"

## State 4-H News

### Kansas 4-H Project Partnership Teams

The Kansas State 4-H Team has reviewed the Kansas 4-H Action Team guidelines and have rebranded this volunteer opportunity to be Kansas 4-H Project Partnership Teams. These teams will be able to provide opportunities for more 4-H project areas.

The Kansas 4-H Project Partnership Teams are:

- Animal Science
- Communication & Expressive Arts
- Consumer & Family Science
- Discovery Days\*\*
- Engineering & Technology
- Leadership & Personal Development
- Natural Resources
- Plant & Environmental Sciences\*

\* This will be a 4-H Project Partnership Team that will be coming in the future.

\*\* Discovery Days also needs a team to help deliver this educational experience, and it will follow the same application process as the Project Partnership Teams and be considered as such.

Find more information and  
the application at  
[https://www.kansas4-  
h.org/volunteers/projectpartn  
ershipteams.html](https://www.kansas4-h.org/volunteers/projectpartnershipteams.html)

With this restructure, everyone interested in serving will need to apply for a 4-H Project Partnership Team. We will be looking for a variety of expertise around the projects that fall under each 4-H Project Partnership Team.

### 2024 4-H Horse Panorama

The 2024 4-H Horse Panorama is scheduled for January 27, 2024, at K-State Salina, a schedule of events is located on the [4-H Horse Panorama website](#). 4-H Horse members are encouraged to register to participate in Horse Bowl, Hippology, presentations, and more.

**Registration is due by January 2**

Find all the details at <https://www.kansas4-h.org/tipsheet/announcement/?id=93652>

### 4-H Horse Show Judges Seminar

Kansas 4-H, the KSU Horse Judging Team and Colby Community College are excited to offer a 4-H Horse Show Judges Seminar Friday, April 12, 2024 in Colby, KS. Please share with potential 4-H Horse Show judges, volunteers and youth. Registration information is forthcoming.

"To Make the Best Better!"

## State 4-H News

### 4-H Dog Judges Training and Certification

The annual training and recertification for 4-H Dog show judges will be January 26-28 at the Leavenworth County Fairgrounds in the Northeast area of Kansas. This is a 5-year certification. All 4-H dog shows must have certified judges for members to qualify for the State Fair Dog Show. There is a reduced cost for leaders/members who want to observe but not become a judge. Registration will be out soon and located on [Kansas4H.org](https://www.kansas4h.org) website under events.

**Registration is due January 12**

### Kansas 4-H Camp at Rock Springs Ranch

Registration for 4-H Camp at Rock Springs is now OPEN! If you are interested in camp at Rock Springs this year, we will have \$100 scholarships again! This year, you will be able to use a coupon code at the time of registration. Our code is **SNCO24**. This is limited to enrolled Shawnee County 4-Hers, so if you sign up for camp before enrolling you will have a week to enroll or you will be sent a bill for the scholarship amount.

<https://www.rockspringsranch4hcamp.org/>

### Kansas State Scholarships

State 4-H Scholarships are OPEN NOW! The deadline to apply for these scholarships is **MARCH 1, 2024**.

The process for these scholarships has been modified. Find all of the information on the state website at: <https://www.kansas4h.org/resources/awards-and-recognition/scholarships.html>





# Shawnee County 4-H Chatterbox

"To Make the Best Better!"



## 2023/2024 KANSAS 4-H PROJECTS



Kansas 4-H has made some changes to Project names starting this new 4-H year. Here is a guide, including a helpful guide to how projects were listed previously!

Beef  
Dairy Cattle  
Dairy Goats  
Dog  
Horse  
Meat Goats  
Pets  
Poultry  
Rabbits  
Sheep  
Swine  
Veterinary Science

Sewing & Textile Design  
Shopping in Style  
Family Studies  
Fiber Arts  
Foods & Nutrition  
Health & Wellness  
Interior Design & Architecture

Entomology  
Agronomy  
Forestry  
Horticulture & Landscape Design

Ag Mechanics Welding  
Building Block Engineering  
Astronomy  
Computer Science  
Electric & Renewable Energy  
Robotics  
Aerospace/Rocketry  
Small Engines  
Uncrewed Aircraft Systems  
Woodworking

Communications  
Performing Arts  
Photography  
Visual Arts

Environmental Science  
Geology  
Shooting Sports  
Wildlife  
  
Civic Engagement  
Leadership  
Reading Adventures  
Self-Determined

### PREVIOUS PROJECT LISTING

Beef  
Dairy, Cattle  
Dairy, Goats  
Dog Care & Training  
Horse  
Meat Goats  
Pets (including Cats)  
Poultry  
Rabbits  
Sheep  
Swine  
Veterinary Science

Clothing & Textiles- Construction  
Clothing & Textiles- Buymanship  
Family Studies  
Fiber Arts  
Foods & Nutrition  
Health & Wellness  
Home Environment

Environment Science  
Geology  
Shooting Sports  
Wildlife

Communications  
Performing Arts  
Photography  
Visual Arts

Citizenship (Civic Engagement)  
Leadership  
Reading  
Self-Determined

Entomology  
Plant Science  
Plant Science- Field Crops  
Plant Science- Forestry  
Plant Science- Horticulture

STEM - Ag Mechanics  
STEM - Architectural Block Construction  
STEM - Astronomy  
STEM - Computer Science  
STEM - Energy Management  
STEM - Robotics  
STEM- Aerospace/Rocketry  
STEM - Small Engines  
STEM - UAS  
Woodworking





"To Make the Best Better!"

## Club Chatter

### Rossville Rustlers

The Rossville Rustlers ended the year with some fun and festive winter activities. The club assisted the local churches and held a local food drive at both the grade school and high school. It was a success and the high school 4-Hers helped transport the items. The club gave prizes to the 1st, 2nd and 3rd place classrooms at the grade school. The club sponsored a cookie decorating booth at the Rossville Christmas Festival. In December, the club got together and sang Christmas Carols to the residents of Oakley Place Senior Living Facility and had a meeting discussing activities for the new year. The club decided to sponsor a craft at January Jamboree and will go ice skating in January. 4-Hers and families enjoyed a dinner from Qdoba and 4-Hers also enjoyed a reindeer game to close out the night along with wrapping gifts for the adopt-a-family project.

Cameron Thompson, Reporter



### Indian Creek

This year's December meeting consisted of decorating Christmas cookies with residents at Home of the Flint Hill's, singing Christmas Carol's, and having a gift exchange.

"To Make the Best Better!"

## Shawnee County 4-H Calendar

### January 2024

4 Shooting Sports II, EMR, 6:30 pm  
4-H Exchange, Farm Bureau Building, 7 pm

7 January Jamboree, Countryside United  
Methodist Church, 2-4 pm

13 4-H Day with KSU Women's Basketball,  
Manhattan

#### **15 Office Closed**

17 Livestock Committee Meeting, Conference  
Room, 7:15 pm

19 Fair Book Cover Contest Deadline, 5 pm

18 Air Pistol Introduction, EMR, 6 pm

22 Paw Prints Dog Club Meeting, EMR, 7 pm

25 Horse Club, EMR, 7 pm

#### **26 Chatterbox Submissions Due**

26-28 4-H Dog Judges Training &  
Certification, Leavenworth

27 Horse Panorama, K-State- Salina campus

### February 2024

1 Shooting Sports: Air Pistol, EMR, 6 pm

4-H Exchange, Farm Bureau Building, 7 pm

5 Bunny Bunch Club Meeting, EMR, 7 pm

7 Shooting Sports 2, EMR, 6:30 pm

8 4-H Events Council, EMR, 7 pm

11 Beef Weigh-in, Gleason's, 1-3 pm

21 Livestock Committee Meeting, Conference  
Room, 7:15 pm

22 Horse Club Meeting, EMR, 7 pm

25 Club Days, SHMS, 2 pm

#### **26 Chatterbox Submissions Due**

Paw Prints Dog Club Meeting, EMR, 7 pm

29 Shooting Sports: Air Pistol, EMR, 6 pm

K-State Research and Extension is an equal opportunity provider and employer.

K-State Research and Extension is committed to providing equal opportunity for participation in all programs, services and activities. Accommodations for persons with disabilities may be requested by contacting the event contact (Grace Wiens) two weeks prior to the start of the event. You may make a request by calling 785-232-0062, ext. 120, or by e-mail at [wien@g@ksu.edu](mailto:wien@g@ksu.edu). Requests received after this date will be honored when it is feasible to do so.

All dates and activities are subject to change.